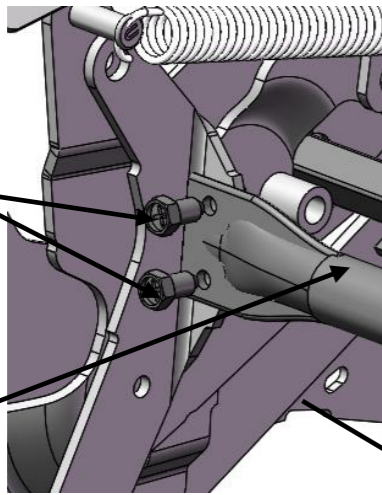


36Z02装配流程图

第一步

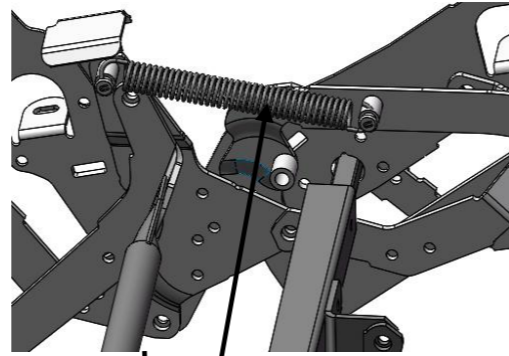
MH自攻螺丝：
M-M7X10

稳定管



第六步

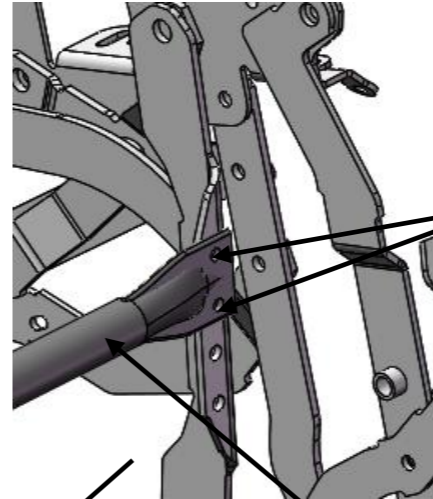
顺序弹簧



第二步

MH自攻螺丝
M-M7X10

稳定管

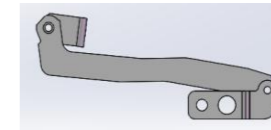


-2宽度配件料号如下，
其他宽度参考BOM装配清单

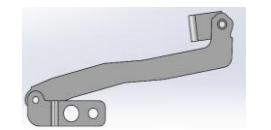
电动转动方管：R23101685102 (-2)

转动角铁：R51168211100 (-2)

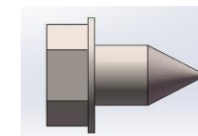
稳定管：R24106517302 (-2)



268电机传动组件左：
R21302681000



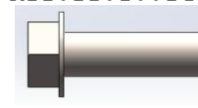
268电机传动组件右：
R21302682000



MH自攻螺丝M-M7X10：
R11011010014



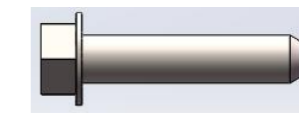
MH自攻螺丝M-M7X23：
R11011010017



MH外六角螺栓M-1/4"×25：
R11011020016



防滑螺母1/4"：
R11011030001



MH外六角螺栓M-1/4"×30：
R11011020017



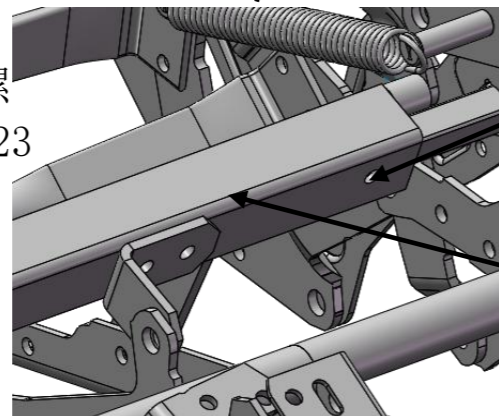
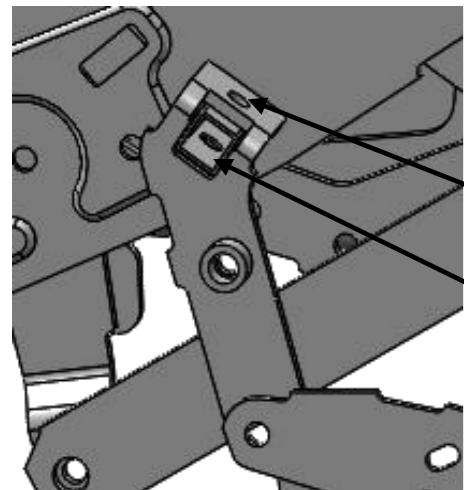
顺序弹簧
R11030000072

第三步

第四步

MH自攻螺
丝M-M7X23

电动转
动方管



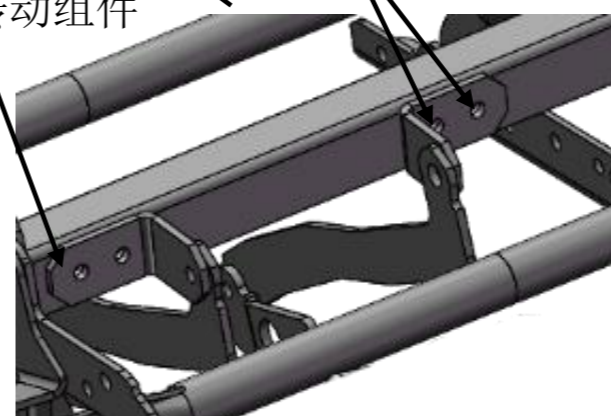
268电机传动组件

MH外六角螺栓：
M-1/4"X25
+防滑螺母1/4"

转动角铁

第五步

MH外六角螺栓：M-
1/4"X30+防滑螺母1/4"



编制：

审核：

批准：