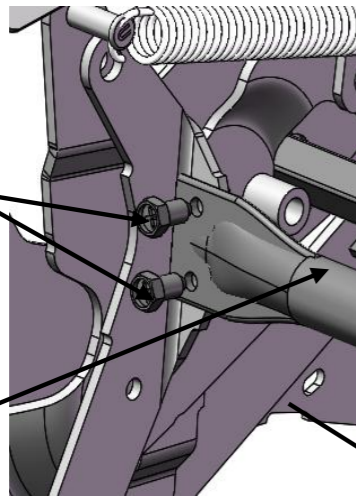


# 36Z23装配流程图

第一步

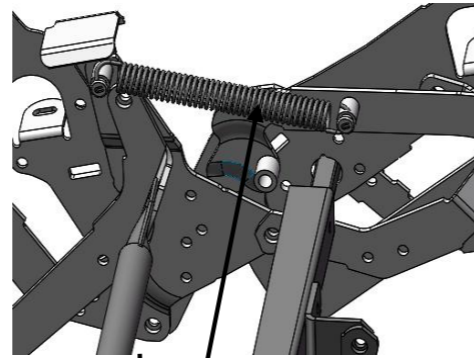
MH自攻螺丝：  
M-M7X10

稳定管



第六步

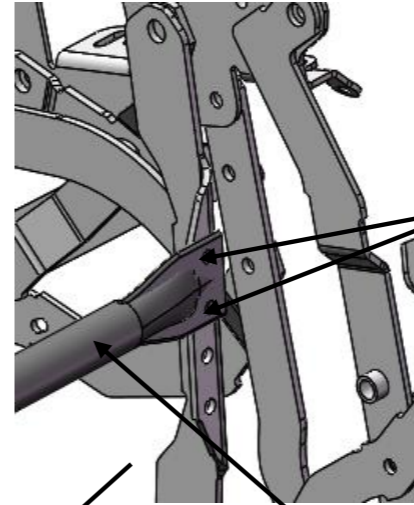
顺序弹簧



第二步

MH自攻螺丝  
M-M7X10

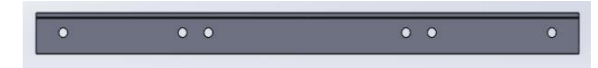
稳定管



-2宽度配件料号如下，  
其他宽度参考BOM装配清单



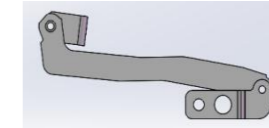
电动转动方管：R23101685102 (-2)



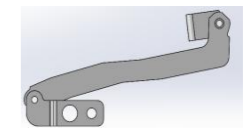
转动角铁：R51168211100 (-2)



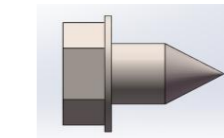
稳定管：R24106517302 (-2)



268电机传动组件左：  
R21302681000



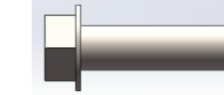
268电机传动组件右：  
R21302682000



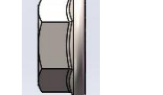
MH自攻螺丝M-M7X10：  
R11011010014



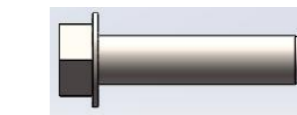
MH自攻螺丝M-M7X23：  
R11011010017



MH外六角螺栓M-1/4"×25：  
R11011020016



防滑螺母1/4"：  
R11011030001



MH外六角螺栓M-1/4"×30：  
R11011020017



顺序弹簧  
R11030000072

第三步

第四步

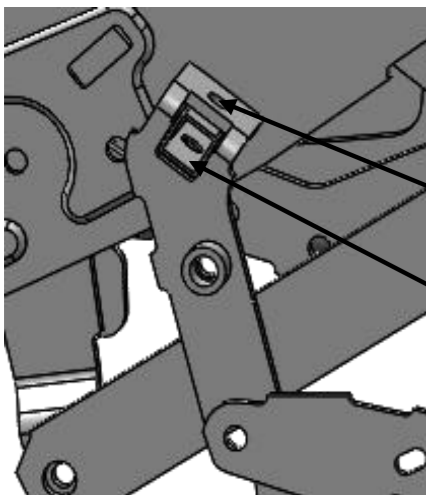
第五步

MH外六角螺栓：M-  
1/4"X30+防滑螺母1/4"

268电机传动组件

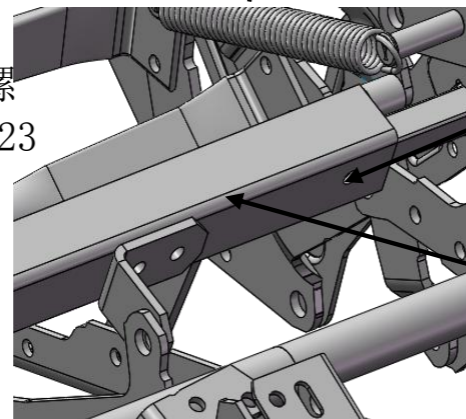
MH外六角螺栓：  
M-1/4"X25  
+防滑螺母1/4"

转动角铁



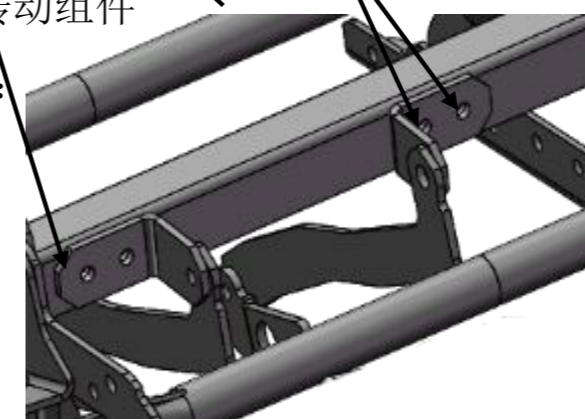
MH自攻螺  
丝M-M7X23

电动转  
动方管



MH外六角螺栓：  
M-1/4"X25  
+防滑螺母1/4"

转动角铁



编制：

审核：

批准：